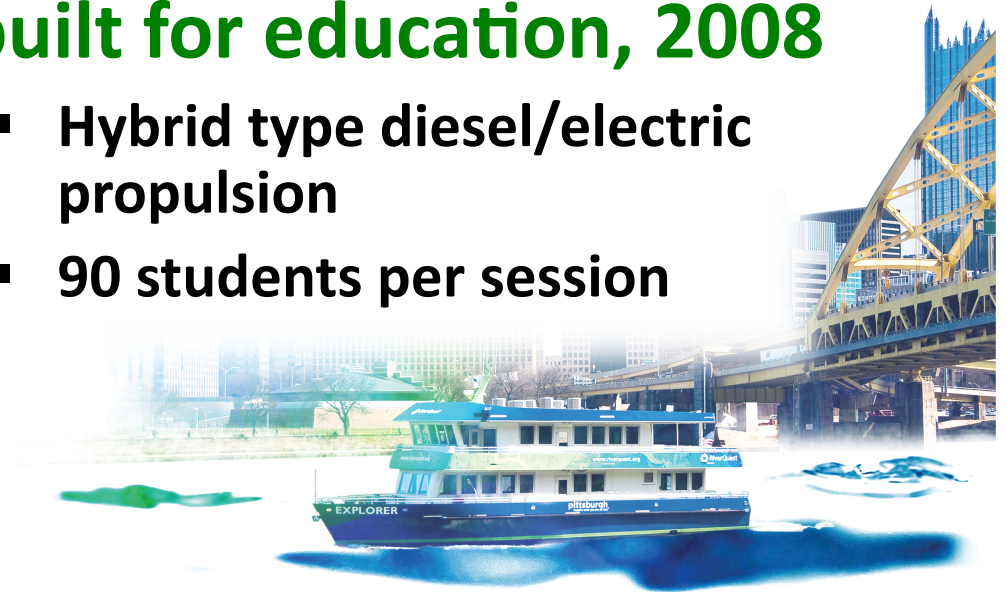




RiverQuest *EXPLORER* sailing the three rivers of Pittsburgh



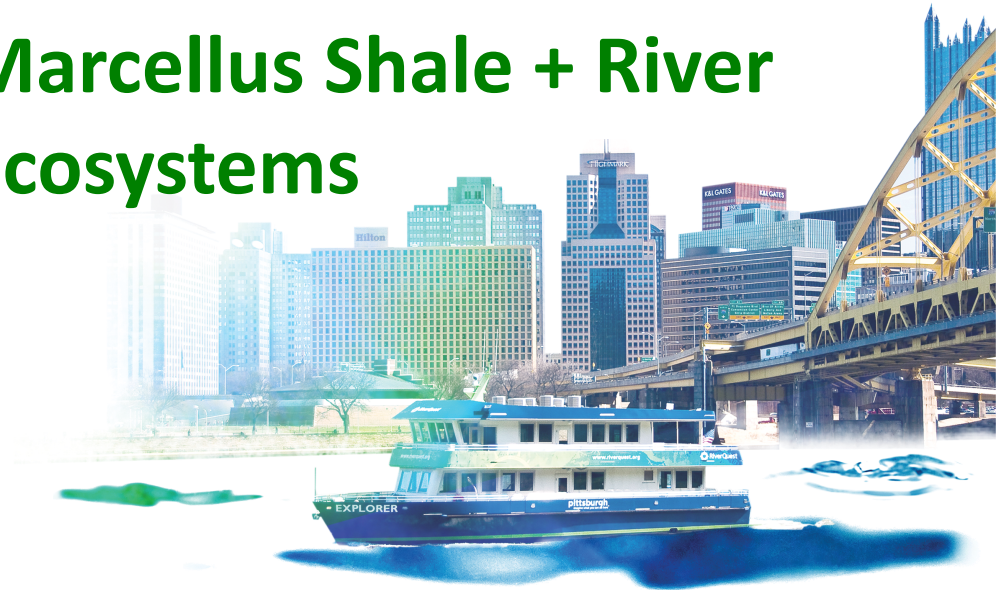
- Incorporated in 1991
  - Pittsburgh Voyager Inc.
  - Retrofitted WWII era Navy YP boats, first sailed 1995
- **EXPLORER: First green boat built for education, 2008**
  - Hybrid type diesel/electric propulsion
  - 90 students per session





## School Programs

- 7,500 per year (gr. 4 -12)
- Environmental Science on the 3 Rivers
- Marcellus Shale + River Ecosystems







## School Programs

- 85,000 students since 1995
- 250 schools
- 70 school districts
- 15+ counties







# RiverQuest



Rinsing a sample of river mud to find macroinvertebrate life



## Teacher Workshops

- Exploring Freshwater Ecosystems
- RiverQuest/ASSET Institute for Inquiry







## University Programs

- **University of Pittsburgh**
- **Duquesne University**
- **Carnegie Mellon University**
- **Robert Morris University**

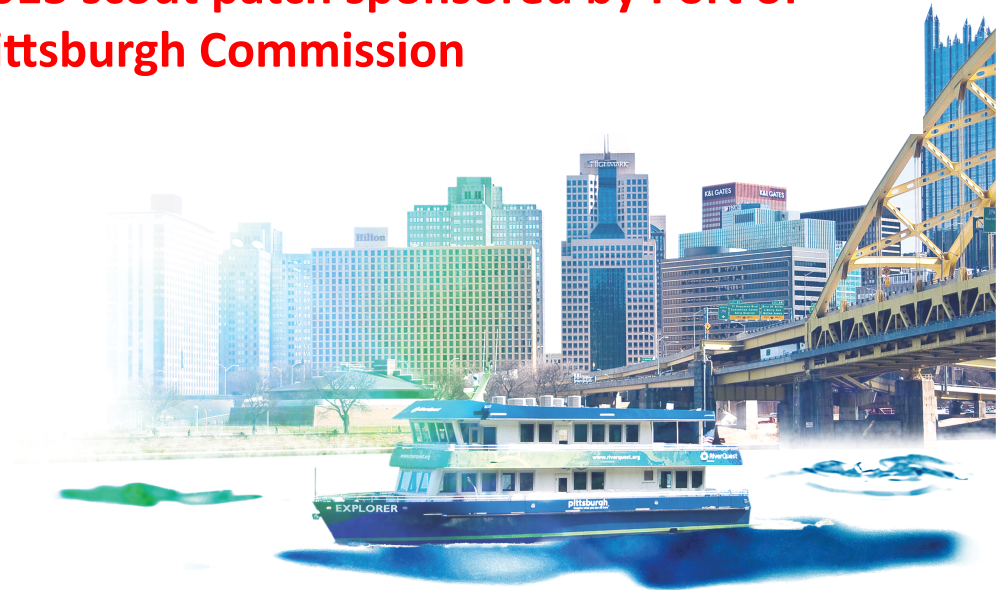






## Public Ticketed Sails

- **Shale Gas Education:**  
2011, 2012 – 1,000 people/year
- **Rivers of Life:**  
2013 scout patch sponsored by Port of Pittsburgh Commission





## Summer Camps

- **RiverQuest day camps:**  
Angler's Adventure, River Science w/CSC
- **Bayer Sustainability Camp:**  
2-week international academic camp  
sponsored by Bayer Foundations in the  
US and EU, since 2008





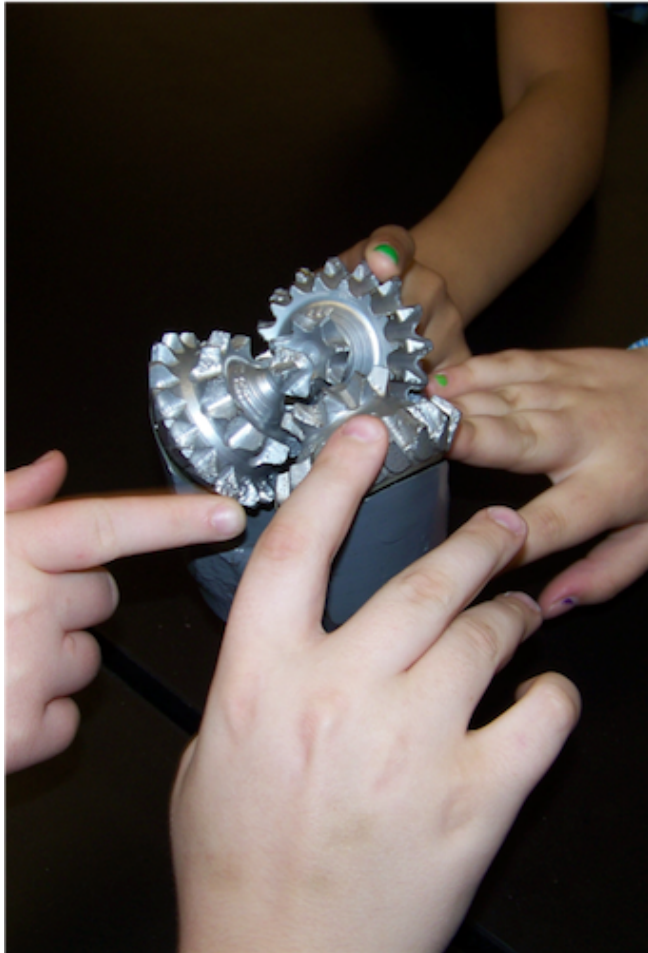


## Educational Charters

- **Community foundations**
- **University outreach**
- **Nonprofits**
- **Camps & Youth Programs**







## 2012-13 Outreach Programs

- **Shale Gas Education:**  
11,500 people, grade 3 – adult, sponsored by PA DEP, EQT Foundation
- **RiverWorks Discovery<sup>®</sup>:**  
5,000 people, festival activities on river commerce and ecology, sponsored by Port of Pittsburgh Commission





## Private & Corporate Charters

Individuals and corporations charter EXPLORER for private events, parties or meetings. Special rates are available to nonprofit agencies. Proceeds benefit RiverQuest School Programs.

[www.RiverQuest.org](http://www.RiverQuest.org)

